



# Hunter

PAUL MANN SIXTY-FIVE

## HUNTER: A TRUE PROFESSIONAL'S TOURNAMENT MACHINE FOR BILLFISHING, TRAVEL AND ENTERTAINMENT

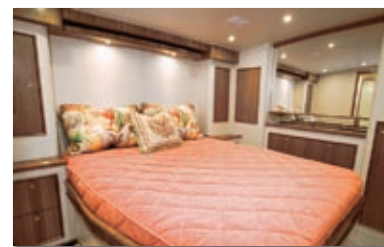
As a boy, Walt Spruill fished the creeks around his hometown and later, with his father and brothers, discovered the joys of offshore fishing. After college he moved to the North Carolina coast to pursue his dream: with a 43' custom Carolina boat, he began a professional offshore fishing charter business. Walt and his wife Nancy soon became well known to the Outer Banks big game fishing community. In 1996, Walt and Nancy bought a 54' custom Carolina they named *Hunter*, after their daughter. With their daughter heading for college, the Spruills yearned for the perfect sportfisher with maximum headroom, plus spacious and comfortable living areas for long term travel to the world's greatest fishing destinations and for entertaining after a winning day of tournament fishing. In 2004 Walt and Nancy commissioned the new *Hunter*. She's a personification of Walt himself: tough, burly and all-business about fishing, yet cordial and full of fun. Walt and Nancy soon will do what they have always wanted—travel the world in comfort and style, and provide their guests with the time of their lives.

## SPECIFICATIONS

Length Overall:	65'
Beam:	18' 6"
Draft:	5' 2"
Weight (dry):	72,000 lb.
Fuel capacity:	1,800 gal.
Water capacity:	300 gal.
Test engines:	Two 1,650-hp Caterpillar C32 diesel inboards
Trans/ratio:	Twin Disc Quick Shift 1.75:1
Props:	33x49 4-blade cup Acme
Steering:	Hynautic hydraulic w/power-assist
Controls:	Twin Disc single lever

# Hunter

PAUL MANN SIXTY-FIVE



## CUSTOM EQUIPMENT LIST

Electronics package featuring: (2) Furuno Navnet VX2 black box, 12 kw Radar, GPS plotter, (2) Furuno MU-120C 12" color LCD, Furuno BBFF1 Fishfind, Northstar 12" 6000i GPS/plotter, Furuno FS-1503 SSB, Simiad AP35 Autopilot, KVH tracvision 4 SAT TV, SeaTel wavecall 3000 SAT phone, (2) Starband/Vertex Matrix VHF, WSI Weather Channel Marine Weather System • Scandvik 10" bow thruster • custom single-band frame & custom built hardtop • custom teak helm pod w/Ongaro stainless steel steering wheel and Palm Beach-style single lever engine control handles • 2/Blue Water helm chairs • custom rod storage in the flybridge • 2/10.5 custom built bridge freezers w/separate compressors • Blue Water large marlin chair polished stainless steel offset stanchion w/padded rocket launcher • Miya Epoch Micro US9R electric teaser reels • 41-foot triple spreader Rupp riggers • Rupp rod holders • live bait well • insulated stainless steel-lined fish-box, bait-box, and drink boxes • Eskimo ice machine • Miele electric cockpit grill • air conditioned cockpit mezzanine • custom cockpit storage lockers • three-part Charles Marine Isoboost voltage stabilizers • Oberdorfer oil-change pump • Max Q by FCI water maker 1000 gal. per day • custom blonde cherry interior w/Carpathian-elm burl accents • Avonite solid surface countertops with cherry sea rail • Grohe fixtures • custom liquor storage • U-Line icemaker • Sub-Zero drawer-type refrigerator and freezer • 2/Kenyon cook-tops • GE Advantium microwave oven • 37" Sony LCD TV in salon and 20" Sony LCD TV in master • Head Hunter custom heads • Stingray saltwater pump and Mach 5 fresh water pump systems • GE washer/dryer





## TEST CONDITIONS

Temperature: 78° F

Humidity: 80%

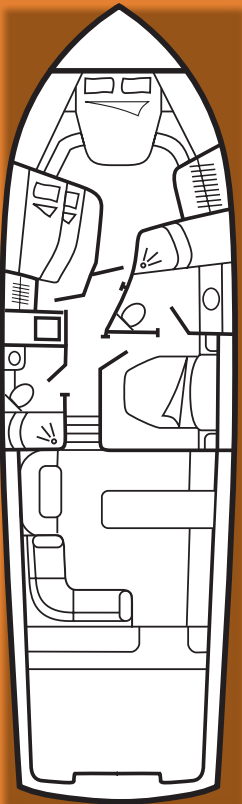
Wind: 10–15 mph

Seas: 1'

Load: 1,500 gal. fuel, 300 gal. water,  
10 persons, 2000 lb. gear

Speeds are two-way averages  
measured w/GPS. GPH taken  
via Caterpillar electronic  
fuel monitoring equipment.

All measurements taken with  
trim tabs fully retracted.



6300 US Highway 64

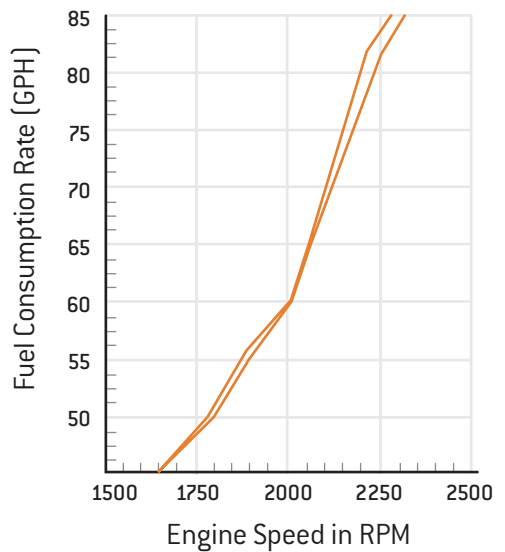
Manns Harbor, North Carolina 27953

[www.paulmanncustomboats.com](http://www.paulmanncustomboats.com)

252-473-1716

## FUEL CONSUMPTION RATE

RPM	MPH	KNOTS	GPH
1700	35	30	46
1900	40	34.6	57
2000	42	36.2	60
2100	43	37	68
2200	44	38	75
2300	47	41	84



## ACCELERATION

